



BevJet Compact

FOR HOME AND COMMERCIAL APPLIANCES



Flojet's BevJet Compact Beverage Dispense System is designed for dispensing water, wine, pulp-free juice, iced teas, alcohol <15%, and syrups.

BevJet Compact is ideal for beverage dispensing applications requiring frequent line changes, and flow rates up to 1.0 GPM (3.8 LPM). The product dispenses safely through NSF Alcohol <15% approved tubing and cleaning is as simple as reconnecting the tube.

BevJet Compact compact design allows it to be mounted in tight spaces such as cabinets, mobile carts and under counter applications. The new robust design combines innovative features and relentless testing to offer a pump with a long, trouble-free service life. In addition the BevJet Compact offers a system intelligence which prevents the continuous operation of an accidental open faucet.

Features and Benefits

- **NSF Certification:** Conforms to NSF 18 standard for food and beverage dispensing equipment
- **Universal Seal Cap:** Fits most water containers
- **Long Life Motor:** Provides years of reliable operation
- **Quick Disconnect Ports:** Speeds installation and replacement of suction and discharge tubing
- **Smart Electronics:** Built in intelligence prevents unit from running dry for longer than 1 minute as well as turns pump off after 5 minutes of constant running to prevent inadvertent continuous operation
- **UL Listed:** Meets electrical safety standards
- **Thermal Overload Protection:** Prevents overheating, protecting the pump and control box from damage
- **Flojet Diaphragm Pump:** Runs dry without damage, extending pump life
- **Illuminated On/Off Switch:** Provides clear visibility in dark or hard-to-reach places

FLOJET
a xylem brand

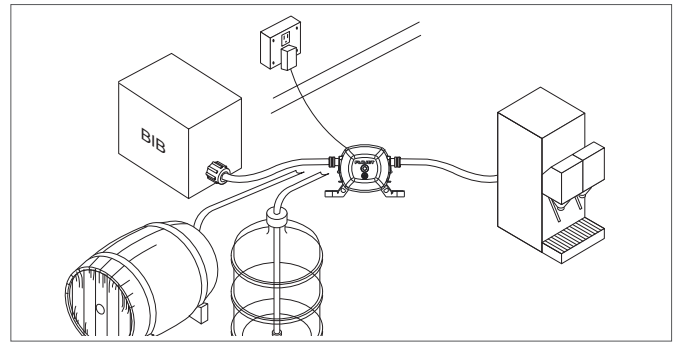
BevJet Compact

Models and Specifications

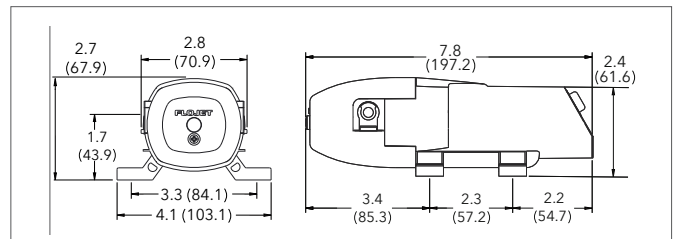
Model Number	Voltage	Plug Type	Approvals
Pump, Fittings and Power Adaptor Only			
BLC1011000A	115 VAC	US	UL, NSF
BLC2011000A	230 VAC	UK	CE, NSF
BLC3011000A	230 VAC	EU	CE, NSF
BLC4011000A	230 VAC	AU	RCM, NSF
BLC9011000A	12 VDC	*wire leads	NSF
Includes the Above Plus Tubing and Universal Seal Cap			
BLC1011010A	115 VAC	US	UL, NSF
BLC2011010A	230 VAC	UK	CE, NSF
BLC3011010A	230 VAC	EU	CE, NSF
BLC4011010A	230 VAC	AU	RCM, NSF
BLC9011010A	12 VDC	*wire leads	NSF

Pump Design	Positive displacement double diaphragm
Max Amps	3.0 amp at 25 PSI (1.7 bar)
Wetted Pump Parts:	
Housing	Polypropylene
Elastomers	EPDM & Santoprene®
Check Valve Spring	Stainless Steel
Inlet Port	1/4" JG (Standard)
Outlet Port	1/4" JG (Standard)
Flow Rate	1.0 GPM (3.8 LPM) Max
Pressure	40 PSI (2.8 bar) Max
Liquid Temperature	Min 34°F (1.1°C) / Max 120°F (49°C)
Handles Viscosity	Up to 240 centipoise
Net Weight	1 lb (0.5 kg)
Dimensions	2.67" H x 4.06" W x 7.76" L (67.9 mm H x 103.1 mm W x 197.2 mm L)
Maximum Run Time	Built in electronics turn pump off after 1 minute dry running or 5 minutes of continuous operation

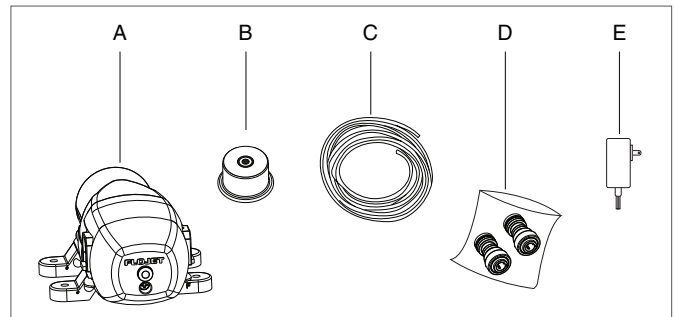
Typical Beverage Installation



Dimensional Drawing inches (mm)



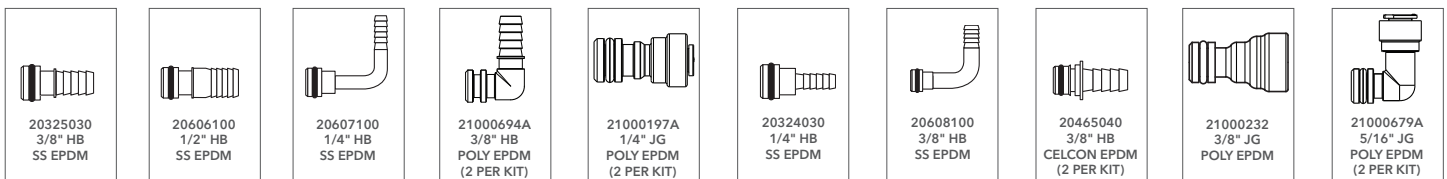
System Includes



- A. Pump Assembly with Integrated On/Off Switch
- B. Universal Seal Cap
- C. Tubing, 20 ft (6.1 m) x 1/4" (6.35 mm) OD
- D. Fittings Kit (PN 21000197A)
- E. Wall Power Transformer



Available Port Fittings (Sold separately, one per kit unless noted)



Warranty: All products of the company are sold and all services of the company are offered subject to the company's warranty and terms and conditions of sale, copies of which will be furnished upon request. The information provided herein is for guidance only, it does not constitute a guarantee of the performance or specification of any individual product or component.

www.xylem.com/flojet

USA

Xylem Inc.
100 Cummings Center Drive
Suite 535-N
Beverly MA, 01915
Tel: +1 978 281 0440
Fax: +1 978 283 2619

USA

Xylem Inc.
17942 Cowan
Irvine, CA 92614
Tel: +1 949 608 3900
Fax: +1 949 608 3887

UK

Xylem Inc.
Bingley Road, Hoddesdon
Hertfordshire EN11 0BU
Tel: +44 (0) 1992 450145
Fax: +44 (0) 1992 467132

CHINA

Xylem Inc.
30/F Tower A
100 Zunyi Road
Shanghai, China 200051
Tel: +86 21 2208 2888
Fax: +86 21 2208 2999

GERMANY

Xylem Inc.
Oststrasse 28
22844 Norderstedt
Tel: +49 40 53 53 73 0
Fax: +49 40 53 53 73 11

ITALY

Xylem Inc.
Via Tommaseo, 6
20059 Vimercate, Milano
Tel: +39 039 685 2323
Fax: +39 039 666 307

AUSTRALIA

Xylem Inc.
3/1 Federation Way
Moorabbin Airport, VIC 3194
Tel: +61 3 8551 6800
Fax: +61 2 9832 6493